

UNIT 3

REFERENCE LIST

(in Běijīng)

- | | |
|---------------------------------------------------------------|--------------------------------------------------------------------------------------------------------|
| 1. B: Nǐ chūqu a! | Oh, you're going out! |
| A: Wǒ xiǎng chūqu mǎi jībēn shū. | I thought I would go out to buy a few books. |
| 2. A: Lǎojiā, nǎr yǒu mǎi shūde? | Excuse me, where is there a place to buy books? |
| C: Wángfǔjǐng Dàjiē yǒu yige Xīnhuá Shūdiàn, hěn dà. | There is a New China Bookstore on Wángfǔjǐng Boulevard that is very large. |
| 3. A: Xīnhuá Shūdiàn lí zhèr yuǎn ma? | Is the New China Bookstore far from here? |
| C: Bù yuǎn, hěn jìn. | It's not far; it's very close. |
| 4. A: Zěnmē qù? Zǒuzhe qù keyi ma? | How do I go? Is it possible to get there by walking? |
| C: Zǒuzhe qù keyi. | It's possible to get there by walking. |
| 5. A: Zěnmē zǒu? | How do I go? |
| C: Cóng dāmén chūqu, cháo běi guǎi, jiù shì Wángfǔjǐng Dàjiē. | You go out the entrance, turn to the north, and that's Wángfǔjǐng Boulevard. |
| 6. *A: Wǒ cóng dāmén chūqu, cháo běi guǎi, duì bu duì? | I go out the entrance and turn to the north. Is that correct? |
| C: Duì le. | That's correct. |
| 7. A: Zǒu duō yuǎn? | How far do I go? |
| C: Zǒu bù yuǎn, lùdōngde dīyīge dàlóu jiù shì Xīnhuá Shūdiàn. | Go a short distance, and the first building on the east side of the street is the New China Bookstore. |
| 8. *A: Lǎojiā, nèige dàlóu shì Xīnhuá Shūdiàn ma? | Excuse me, is that building the New China Bookstore? |
| D: Shì. | Yes. |

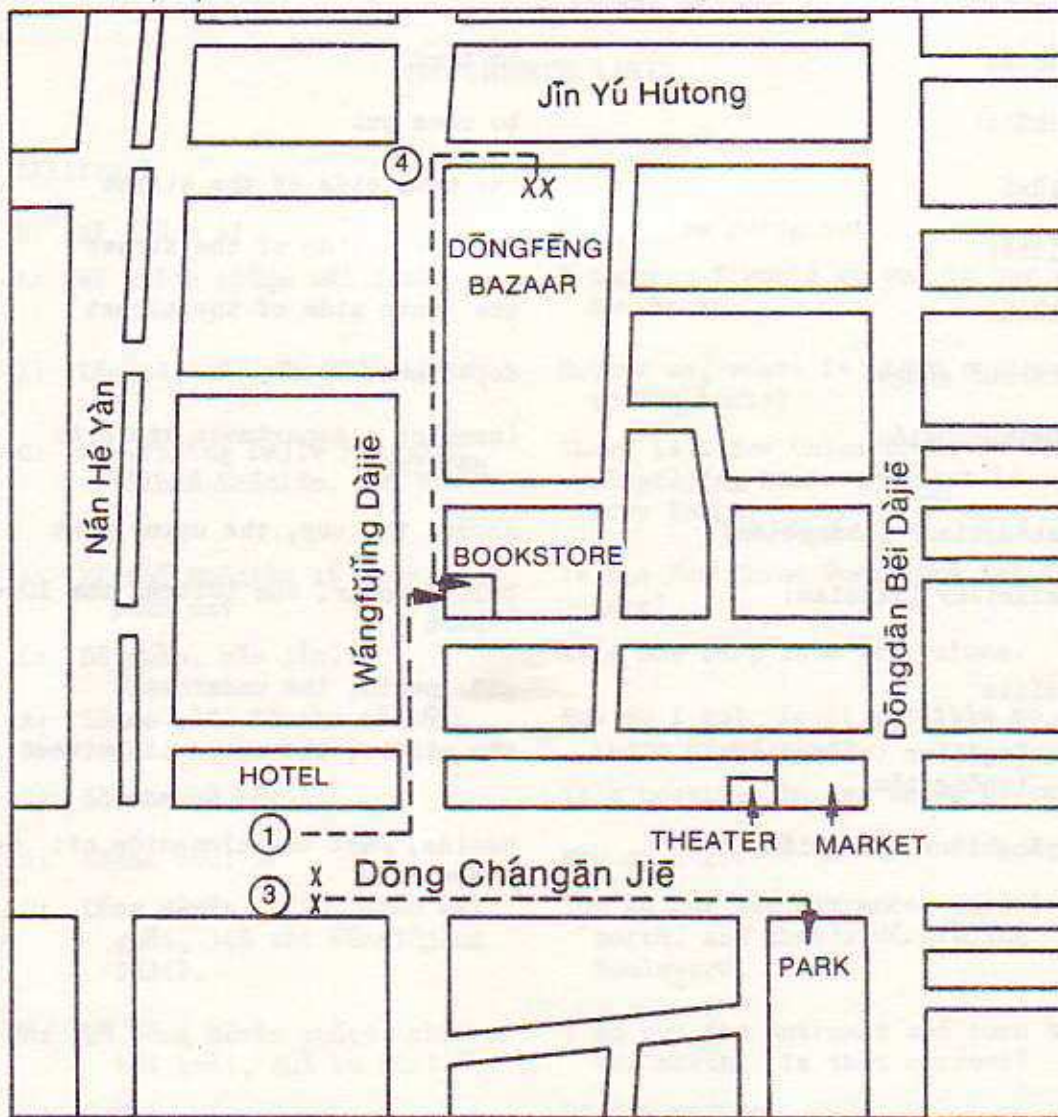
*This exchange occurs on the P-1 tape only.

ADDITIONAL REQUIRED VOCABULARY
(not presented on C-1 and P-1 tapes)

- | | |
|--------------------------------------------|---------------------------------------------|
| 9. zhuǎn | to turn |
| 10. chūlai | to come out |
| 11. lùxī | the west side of the street |
| 12. lùběi | the north side of the street |
| 13. lùnán | the south side of the street |
| 14. bǎihuò gōngsī | department store |
| 15. Bǎihuò Dàlóu | (name of a department store in
Běijīng) |
| 16. shàngbianr (shàngbian) | above; the top, the upper part |
| 17. xiàbianr (xiàbian) | below, under; the bottom, the lower
part |
| 18. dǐxia | underneath; the underneath |
| 19. zhōngjiānr (zhōngjiānr)
(zhōngjiān) | the middle, the space in between |
| 20. pángbiānr (pángbiān) | beside, next to, alongside of;
the side |

MAPS FOR C-1 TAPE

DISPLAYS I, III, IV



DISPLAY II

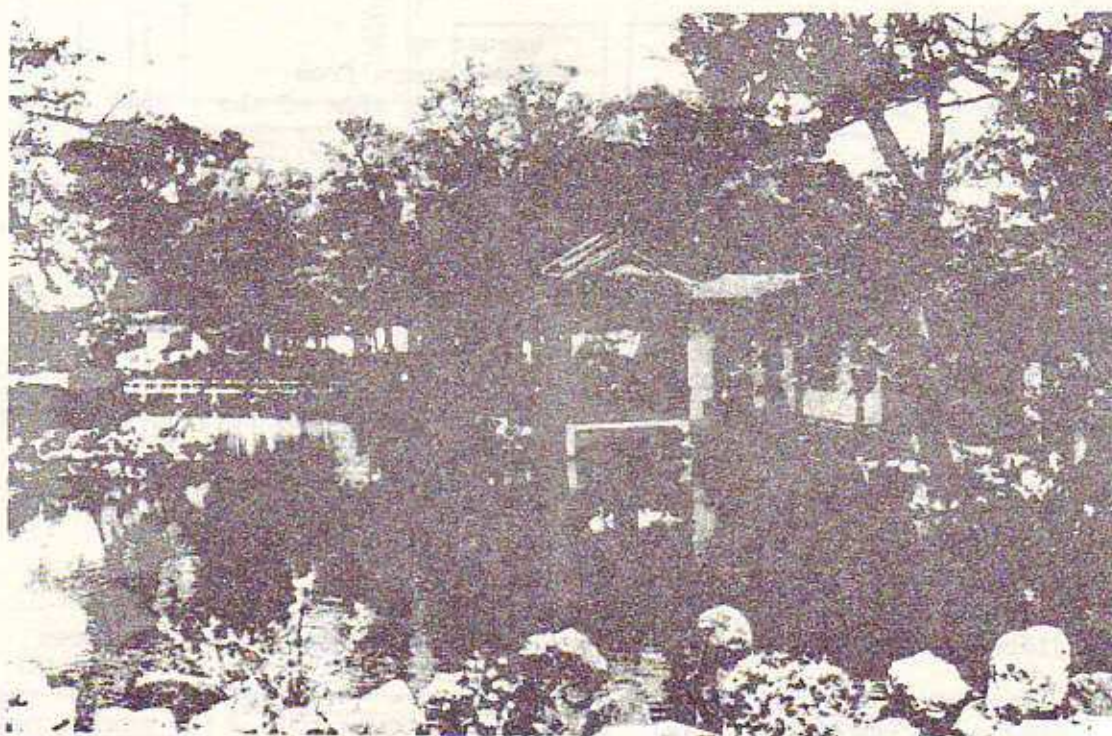


VOCABULARY

Bǎihuò Dàlóu	(name of a department store in Běijīng)
bǎihuò gōngsī	department store
cháo	to, towards
chūlai	to come out
chūqu	to go out
dàjiē	boulevard
dǎlóu	building
dāmén(r)	entrance
dǐxia	underneath; the underneath
duó yuǎn	how far
guǎi	to turn
jǐ-	a few
jǐge	several
jìn	to be close, to be near
lǎojiā	excuse me
lǐ	from, apart from
lùběi	the north side of the street
lùdōng	the east side of the street
lùnán	the south side of the street
lùxī	the west side of the street
pángbiānr (pángbiān)	beside, next to, alongside of; the side
shàngbiānr (shàngbiān)	above, the top, the upper part
shūdiàn	bookstore
xiàbiānr (xiàbiān)	below, under; the bottom, the lower part
Xīnhuá Shūdiàn	New China Bookstore (Běijīng)
yíge	a, an
yuǎn	to be far
zhōngjiānr (zhōngjiānr) (zhōngjiān)	the middle, the space in between
zhuǎn	to turn
zǒuzhe	walking

(introduced on C-2 tape)

dài biǎo	to wear a watch
Hàn-Rì zìdiǎn	Chinese-Japanese dictionary
niàn	to be pronounced, to be read as
Rì-Hàn zìdiǎn	Japanese-Chinese dictionary
yíjiàn yīshang	a piece of clothing
zǎo	to be early
zǒu dào	to walk to



Wén Wǔ Temple, near Sun-Moon Lake in Taiwan